

TORNADO

Model
BL-800T



Thanks for Choosing Tornado
Blender

ELARABY



19319

www.elarabygroup.com



Tornado

Important Safety Instructions

When using this electrical appliance, basic safety precautions should always be followed, including the following:

1. Read all instructions.
2. Before using check that the voltage indicated on the product corresponds with the voltage of your electrical outlet.
3. Do not let cord hang on hot surface or over edge of table or counter.
4. Do not operate any appliance with a damaged cord or plug or after the appliance malfunction or has been damaged in any manner. Return the appliance to the nearest authorized service facility for examination, repair or adjustment.
5. If the supply cord is damaged it must be replaced by the manufacturer or its service agent or a similarly qualified person in order to avoid a hazard.
6. Close supervision is necessary when any appliance is used by or near children.
7. Avoid contacting the moving parts.
8. Keep hands and utensils out of container while blending to reduce the risk of severe injury to persons or damage to the blender. A scraper may be used but must be used only when the blender is not running.
9. The use of attachments not recommended or sold by manufacturer may cause fire, electric shock or injury.
10. Unplug from outlet when not in use, before putting on or taking off parts, and before cleaning. To disconnect, turn any control to "0", then remove plug from wall outlet by grasping the plug, not the cord.
11. To reduce the risk of injury, never place blade assembly on motor unit without the jar properly attached.
12. This appliance shall not be used by children. Keep the appliance and its cord out of reach of children.
13. Appliances can be used by persons with reduced physical, sensory or mental capabilities or lack of experience and knowledge if they have been given supervision or instruction concerning use of the appliance in a safe way and if they understand the hazards involved.
Children shall not play with the appliance.
14. Do not leave the machine on unattended.

Important Safety Instructions

15. When removing the blender from the motor unit, wait until the blades have completely stopped.
 16. Always operate blender with cover in place.
 17. Always use the appliance on a secure, dry level surface.
 18. Never place this appliance on or near a hot gas or an electric burner or where it could touch a heated appliance.
 19. Do not use outdoors.
 20. Do not use appliance for other than its intended use.
 21. Do not operate without this cover in place;
 22. Avoid any contact with blades or moveable parts.
 23. Switch off the appliance and disconnect from supply before changing accessories or approaching parts that move in use.
 24. Always disconnect the appliance from the supply if it is left unattended and before assembling, disassembling or cleaning.
 25. This appliance is intended to be used in household and similar applications such as:
 - staff kitchen areas in shops, offices and other working environments;
 - farm houses;
 - by clients in hotels, motels and other residential type environments;
 - bed and breakfast type environments.
 26. Care shall be taken when handling the sharp cutting blades, emptying the bowl and during cleaning.
 27. Be careful if hot liquid is poured into the appliance as it can be ejected out of the appliance due to a sudden steaming.
- a floor appliance never carry it while in use.
14. This is a 2600 watt appliance. To avoid a circuit overload, do not operate a high wattage appliance on the same circuit.
 15. If an extension cord is absolutely necessary, the marked electrical rating should be at least as great as the electrical rating of the appliance. Cords rated for less amperage may overheat. Care should be taken to arrange the cord so that it cannot be pulled or tripped over.
 16. Do not cut or attempt to extend the steaming hose.

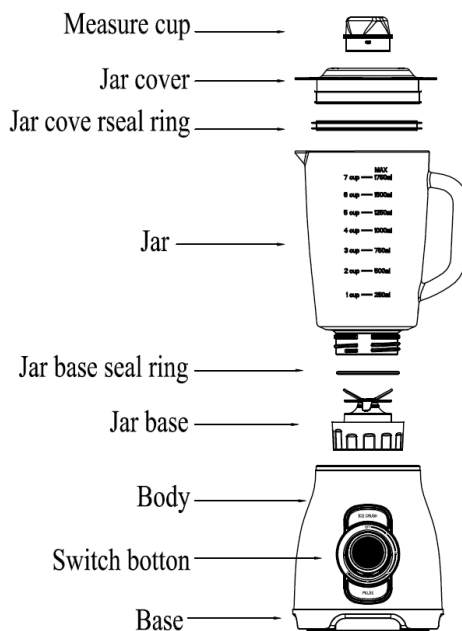


Fig. 1

Know Your Blender

Switch Button Before The First Use

1. Before first use, unpack the appliance and place all parts on a horizontal surface.
2. Ensure the Speed Selector to "0" Position, then plug into power outlet and set Speed Selector to your desired setting. You can press down the Pulse button or Ice crush without releasing it if want to accelerate the process of blending. The detailed information is shown in below (See Fig. 2).

NOTE: Make sure the jar cover is placed in position completely before operating, and never open the jar cover during operation. In addition, for the sake of consistency, you can use the stir stick to stir mixture through the opening in the center of the measuring cup.

3. Once all pieces have been cleaned and dry thoroughly, reassemble.

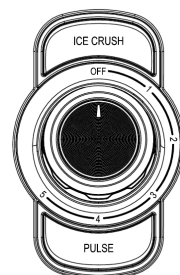


Fig. 2

Know Your BLEANDER

- 1) Invert the jar onto a level surface, holding the jar handle, put the blade assembly onto the jar base bottom and secure the blade assembly by turning it clockwise until tight(See Fig.3)
 - 2) Reposition the jar assembly with its opening upwards. Wrap the seal ring 1 around the lid bottom and put the lid onto the jar assembly. Place the measure cup exactly into the lid by fitting the small projection on the both sides of the cup into the slots of the lid and turning the cup clockwise until tight. (See Fig.4)
 - 3) Finally, place the assembled jar onto the motor unit by aligning the strip on the assembled jar bottom. (See Fig.5)
- CAUTION:** Jar and jar base is now secure. Do not try to twist the jar and jar base onto motor unit

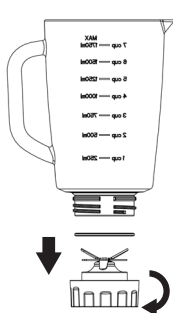


Fig. 3

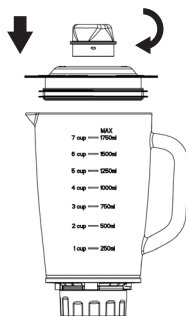


Fig. 4

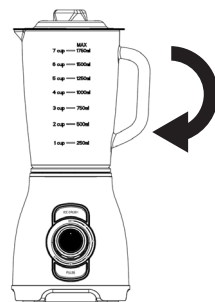


Fig. 5

ELECTRICAL SPECIFICATIONS

Voltage	Frequency	Power	Function	Operating Time	Rest Period	Max Capacity
220-240V	50/60Hz	800W	Pulse/blend	1min	Min. 2mins	1750ml
220-240V	50/60Hz	800W	Ice crush	3sec.	Min. 3sec.	150g

Blender Operation

1. Peeled or cored the fruit or vegetables and then cut it into small dices.
2. Place the food to be blended into the jar (See Fig.6) . Usually, certain amount of purified water has to be added to facilitate the smooth running of appliance. The proportion of the food and water is 2:3.The amount of mixture should not exceed the max level as indicated on the jar.

(All the models have this feature)

FOOD TYPE	SPEC	WEIGHT	SPEED	OPERATE TIME
Carrot	Cut into 15mm*15m- m*15mmm	Carrot: 800g Water:950g	High speed	seconds 20
Carrot	Cut into 15mm*15m- m*15mmm	Carrot: 600g Water: 900g	High speed	minutes 2

Note: never use boiling liquids or run the appliance empty.

3. Put the lid on the jar. Be sure the measuring cup is in place.
4. Plug the power cord into a standard wall outlet.
5. Choose to the appropriate speed setting for your task(Please stir food at the highest speed,but not at low speed).
6. For quick or delicate blending tasks, press the key to Pulse button or Ice crush position and hold for a few seconds and then release, the key will reset to “0” position automatically. Operate several times until the consistence you want is obtained.
7. If you want to add ingredients while the blender is working, remove the measuring cup and place through the lid opening. See Fig.7
9. When the consistence you desire is obtained, press the key to “O” position.

Note: 1) For each use, the consecutive operation time should not exceed 2 minutes. at least 10 minutes rest time must be maintained between two continuous cycles, let the unit cool to room temperature before performing next operation cycle.

2) If you want to stop the machine during operation, press the key to “O” position anytime.

Blender Operation

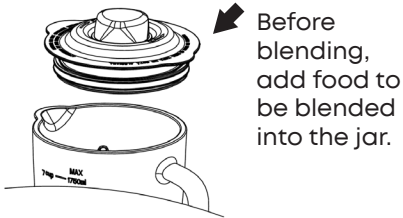


Fig. 6

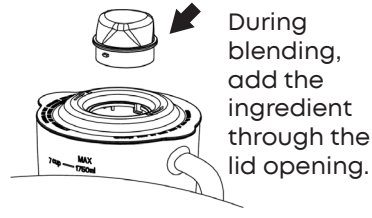


Fig. 7

WARNING:

1. Never operate the appliance continuously for more than 2 minutes per time.
2. Blades are very sharp. Handle with care.
3. Do not operate without the jar cover in place.
4. Do not disassemble the jar or bowl from the jar base or bowl base in general condition.
5. This appliance can be used by children aged from 8 years and above and persons with reduced physical, sensory or mental capabilities or lack of experience and knowledge if they have been given supervision or instruction concerning use of the appliance in a safe way and understand the hazards involved. Children shall not play with the appliance. Cleaning and user maintenance shall not be made by children without supervision.
6. Blending maximum level load or hard fruits and vegetables must be sure that the speed selector is setting at highest speed (speed 5). If the speed is used too low, the motor will be damaged due to insufficient torque. When the motor speed is found to be too slow, you must immediately use a higher speed setting to blend or turn the speed selector to "0" to stop blend!

Cleaning And Maintenance

Make sure to disconnect appliance from power supply before cleaning

For blender

The Auto Clean function can clean the blender easily and rapidly in complete safety.

1. Pour a little warm soapy water into the Jar and turn the Speed Selector to "1" position and press down the Pulse button without releasing it for a few seconds.
2. Dismantle all detachable parts. Disassemble the Jar from the

Cleaning And Maintenance

motor unit and rinse it under running water, then detach the blade assembly from the jar assembly, take the blade assembly out, finally remove the jar base seal ring . In addition, detach the measure cup from the jar cover. Rinse the jar, blade, jar base, jar cover, seal ring and measuring cup under running water. See Fig.8

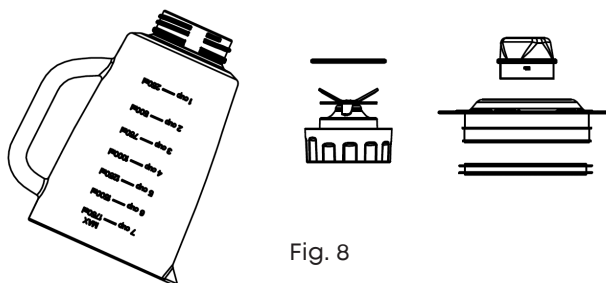


Fig. 8

3. Wipe the outer surface of motor unit and with a damp cloth.

NOTE: Do not use abrasive cleanser and never immerse motor unit in water for cleaning

4. Dry all parts and then assemble them. The method of assembling blender attachment just is in opposite of its detaching sequence.

NOTE: If any problem has been encountered during using, never disassemble the Motor Unit by yourself. There are no user serviceable parts inside. Only contact the authorized service facility for examination and repair.

Environment friendly disposal

You can help protect the environment!

Please remember to respect the local regulations: hand in the non-working electrical equipments to an appropriate waste disposal center.



ELARABY

 **19319**  www.elarabygroup.Com
Tornado